

HOTEL  
BENNETT  
CHARLESTON



## THE GATEWAY TO THE COUNTRY'S MOST CHARMING CITY

Charleston is considered the most charming city in the country - and some say, the world. The Holy City's rich heritage and southern grace pairs perfectly with its vibrant architecture and mesmerizing scenery. Hotel Bennett embodies the spirit. Built by native Charlestonians, the lavish hotel entrance opens upon King Street, the gateway to culture and class. It's the most authentic and luxurious way to experience this world-class city. Explore renowned restaurants, historic landmarks, shopping, arts, theater, outdoor activities and endless escapes in and around the city. Whether visiting for business or pleasure, Charleston offers special experiences for everyone.

## MEETINGS & EVENTS

Hotel Bennett features over 12,000 square feet of the most luxurious indoor and outdoor event spaces in Charleston in which to meet and celebrate. The 6,600 square foot Crown Ballroom features a dramatic 30-foot ceiling and expansive arched windows. An elegantly appointed boardroom, a Piazza overlooking Marion Square, a rooftop meeting room and event spaces with sweeping city views adorn the hotel.

## ACCOMMODATIONS

179 stylish guestrooms and suites transcend traditional upscale accommodations with custom furnishings and design that authentically reflect Charleston's famed elegance and grace. Indulge in designer pedestal tubs, pristine showers, luxurious bedding and locally inspired artwork.

## DINING & RECREATION

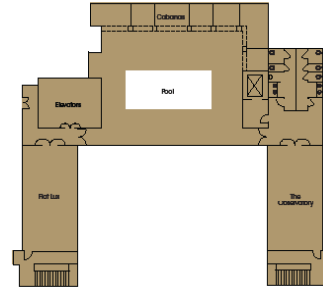
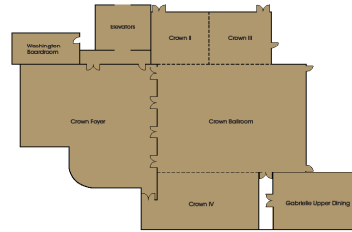
Experience outdoor European style dining at Gabrielle, afternoon tea and champagne in Camellias famed for its etched-mirrored ceiling and reclaimed pink marble, a French-inspired La Pâtisserie, and rooftop cocktails and views at Fiat Lux. You will find dining and beverages experiences unlike any other in Charleston to enjoy. An urban oasis, the Spa at Hotel Bennett, offers signature treatments and a retail shop.

## EXPLORE

Curated group experiences can be custom-designed to incorporate historical, culinary, art, music, shopping and outdoor exploration.

## ACCESSIBILITY

Charleston International Airport (CHS) offers non-stop flights to 31 airports and 26 cities in the United States and United Kingdom.



Event Space	Square Footage	Dimensions L x W	Banquet	Classroom	Boardroom	Reception	U-Shape	Hollow Square
<b>First Floor</b>								
Private Dining Room	481	13 x 37	20		16			
Camellias	1,104	23 x 48				36		
<b>Second Floor</b>								
Crown Ballroom	6,697	102 x 50	400	200		550	52	60
Crown I	5,353	61 x 49	240	125		300	42	52
Crown II	535	19 x 28	40	30	16	40	16	20
Crown III	535	19 x 28	40	30	16	40	16	20
Crown IV	1,300	20 x 65	60	32	32	60	20	24
Crown Foyer	2,925		70			250		
Washington Boardroom	450	15 x 30			16			
Upper Gabrielle	1,247	29 x 43			16	75		
<b>Roof Top</b>								
Pooldeck & Cabanas	3,024	54 x 56	60			120		
The Observatory	858	39 x 22	60	36	28	75	28	28

For sales and reservation inquiries, please visit [hotellbennett.com](http://hotellbennett.com) or call 844.835.2625